

51116HOM UM - Fosmon QSG

Height: 75 mm
Width: 75 mm
Style: Fold

Front



Fosmon Waterproof Wireless Anti-Theft Bike Alarm w/Remote Control - Black (700mAh rechargeable Lithium Battery w/USB-C Cable)

DO NOT RETURN THE PRODUCT
There are good days and there are bad days. It is our BAD if the product is not working, or if you are not happy with it. PLEASE GIVE US A CHANCE and WE WILL MAKE IT RIGHT.

1-833-3-Fosmon (833-336-7666)
(612) 435-7508
support@fosmon.com

THIS ALARM REQUIRES A FULL CHARGE BEFORE FIRST USE IN ORDER TO TURN THE DEVICE ON

Thank you for purchasing this Fosmon product. For optimum performance and safety, please read this user manual carefully before operating and keep it for future reference.
Fosmon's 110dB Waterproof Wireless Anti-Theft Bike Alarm with Remote Control and rechargeable 700mAh battery is a great way to keep your bicycle and other items secure.

Package Includes

- 1x Waterproof Wireless Anti-Theft Bike Alarm
 - 1x Tube Mounting Bracket
 - 2x Silicone Pads
 - 1x Screw Driver
 - 1x Zip Tie/Double Sided Tape Mounting Bracket
 - 1x Double Sided Tape Pad
 - 1x USB-A to USB-C cable
- 1x Wireless Remote
 - 1x Security screw
 - 2x Mounting Screws
 - 1x Allen Key
 - 2x Zip Ties
 - 1x User Manual

Specifications

Decibel	110dB
Water Resistance	IP55
Internal Battery	700mAh Lithium
Battery Life	1~3 months active/6 months standby
Remote Battery	27A 12v battery/1~2 year lifespan
USB Charging	USB-C 5V/1A
Remote Range	~260 feet/80 meters

Features

1. 3 Alarm Tones
2. 7 levels of sensitivity
3. 3 Alarm Volume levels
4. UV resistant PC construction
5. Multiple mounting bracket methods
6. Built-in long lasting lithium battery
7. USB-C charging

Product Diagram

2.1 Alarm Diagram

① Speaker ② 5V USB-C Port
③ Two-part Bracket ④ Silicone Pad ⑤ Pair Button
⑥ Double-sided Tape ⑦ Bracket Base ⑧ Zip Ties

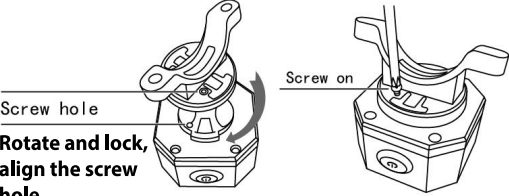
Bracket Installation

Zip Ties / Double-sided Tape Installation

Arm Button
Disarm Button
Ringtone Button
Bell Button

HOW TO USE

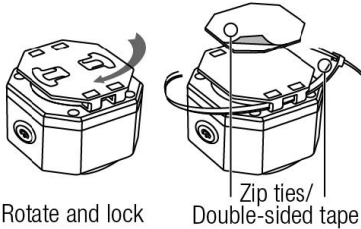
- (Fully charge before use)
- Bracket Installation**
1. Insert and rotate the alarm to the top of the bracket until you feel the two lock together and the security screw holes are aligned.
 2. Install the security screw using a small Philips head screwdriver.



- Rotate and lock, align the screw hole**
3. Place the 2 silicone pads along the inside of both halves of the bracket.
 4. Align the 2 halves of the bracket around what you are installing the alarm on
 5. Use the included long screws to tightly and securely clamp the bracket around your intended installation area.

Zip Tie/Double Sided Sticky Tape installation

1. Insert and rotate the alarm into the top of the ziptie/double sided tape installation bracket until you feel the bracket and alarm lock in with each other.



2. If using zip ties, run them through either one or both of the provided channels
 - a. Wrap the zip ties around your intended installation area and pull tight to ensure a secure fit.
3. If using double sided tape installation method, peel one side of the tape and stick it firmly to the back of the bracket
 - a. Peel the other side and stick firmly to your intended installation area, pressing firmly for 30 seconds to ensure a secure bond.

OPERATION:

1. Remote operation

- a. Arm button:**
- i. Used to arm the alarm. Pressing once will arm the alarm. This is confirmed with first a Do Re Mi tone and 5 seconds later a beep that confirms the alarm is armed.
- b. Disarm Button:**
- i. Used to disarm the alarm. When pressed, a Mi Re Do tone will play confirming the alarm is disarmed.
 - ii. When armed, if the alarm is sounding you can press this button to stop the alarm tone.
- c. Ringtone Button**
- i. This button is used to choose between 3 alarm tones.
NOTE: This button cannot be used when the alarm is armed.
- d. Bell Button**
- i. This button is used to briefly sound the selected alarm tone. This is useful if you are unsure where you left your bike or are actively searching for it.

Functions and Settings

Sensitivity Adjustment

- There are 7 sensitivity levels measured in musical pitches, Do, Re, Mi, Fa, So, La, Ti
 - Do = Highest Sensitivity
 - Ti = Lowest Sensitivity
1. Press and hold () for about 6 seconds, and the LED will turn off and then back on.
 2. Press () once, and it will sound from Do up to your current sensitivity setting.
 3. Repeatedly press () until you hear the desired musical pitch.
 4. Once desired sensitivity is confirmed, press () once to exit the setting.

Volume Adjustment

1. Press and hold () for about 6 seconds, and the LED will turn off and then back on.
2. Press () to cycle through the 3 volume levels.
3. Once the desired volume is confirmed, press () once to exit the setting.

PAIRING THE REMOTE TO THE ALARM

- a. Press the disarm button on your remote
- b. Press and hold the pairing button on your alarm for about 3 seconds until you hear a tone confirming you are in pairing mode. Pairing mode will stop after 30 seconds, or if you press the pairing button again while the device is in pairing mode.

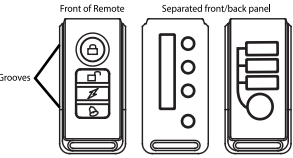
- c. Press the arm button on your remote to pair to the alarm.
- d. If successful you will hear a Du Du tone to confirm the pairing.
- e. Up to 8 remotes can be paired to one alarm.

DELETING ALL PAIRED REMOTES

- a. Press the disarm button on the remote.
- b. Press and hold the pair button on the alarm
- c. Ignore the first tone that occurs after 3 seconds and keep holding the pairing button
- d. After about 7 more seconds you will hear 3 successive Du sounds. This confirms all remote pairings have been deleted.

Replace Remote Battery

- Low Battery Indicator: LED will begin to dim and wireless range becomes shorter
- 1 - Using a flathead screwdriver, insert it into the grooves found on the left side of the remote (while upright) and pry upwards.
 - 2 - Pry upwards around the remote's frame afterwards to separate the remote's front panel from the back panel.
 - 3- Separate the two panels and replace the battery



Follow Us On Social Media



www.fosmon.com
support@fosmon.com
© 2022 Fosmon Inc. All rights reserved.

Recycling the Product

To dispose this product properly, please follow the recycling process regulated in your area.

Limited Lifetime Warranty

This Fosmon product includes a limited lifetime warranty. Please visit our Fosmon website for more details.

FCC Information

This device complies with Part 15 of the FCC Rules. Operation is subject to the following two conditions: (1) this device may not cause harmful interference, and (2) this device must accept any interference received, including interference that may cause undesired operation.