

HD8200 User Manual

Size 4.5 in. (H) x 13.75 in. (L)
Fold 5 times.



DO NOT RETURN THE PRODUCT

There are good days and there are bad days.
It is our BAD if the product is not working,
or if you are not happy with it.

PLEASE GIVE US A CHANCE and
WE WILL MAKE IT RIGHT

Contact US:
Toll Free: 1-833-3-FOSMON (833-336-7666)
Direct: (612) 435-7508
Email: support@fosmon.com



Fosmon [UL Listed] AC125V/15A In-Wall 4-Hours Countdown Timer

User Manual
Go to fosmon.com for video instructions

Thank you for purchasing this Fosmon product. For optimum performance and safety, please read this user manual carefully before operating and keep it for future reference.

Fosmon's timer switch replaces a standard single-pole wall switch and saves money on energy costs. It will automatically turn switched devices OFF when the selected time runs out.

Disclaimer Statement

We are not liable for any damage or destruction to personal properties that are contained inside or outside the Fosmon product.

Package Includes

- 1x Timer
- 1x Wall plate
- 2x Mounting screws (Wall box) – 0.748 in.
- 2x Mounting screws (Wall plate) – 0.33 in.
- 1x Neutral Wire (White) – 5.9 in.
- 1x P4 Wire Cup
- 1x User Manual

* Tools Required for Assembly: flathead screwdriver. (not included)

Specifications

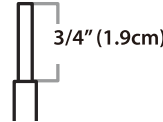
Supply Voltage	125V AC / 60Hz
Resistive/General Use	15 A
Tungsten	1000 W
Electronic Ballast	500 VA
120V AC / 60Hz	½ HP
Ballast	8.3 A

Installation Instructions

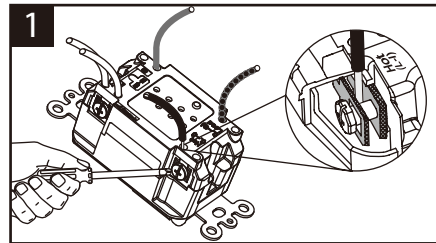
Warning: To avoid fire and/or shock, turn off power. Make sure the power is off before wiring. If you are unsure or uncomfortable with installation, contact a licensed electrician.

- This device is to be installed in a wall box measuring at least 3 in. x 2 in. x 2-1/2 in. (standard single gang electrical wall box) and wired in accordance with National Electrical Code.
- Straighten each conductor and strip 3/4 in. of insulation from each wire.

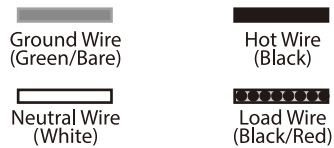
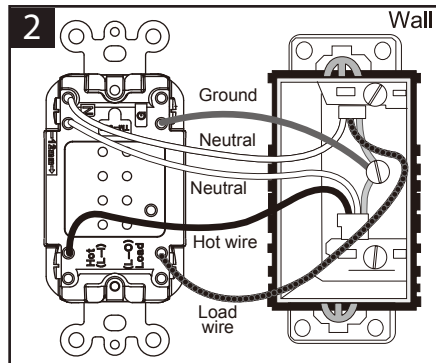
Strip Length



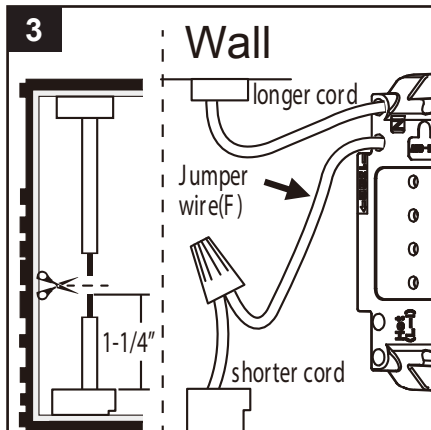
3. Begin by loosening all the screws on your In-Wall Timer. You'll notice there is now a loose plate in the hole. The wires will need to be inserted in the middle and tightened with a screwdriver. (see figure 1). The screw terminal accepts 14AWG-12AWG copper wire (12AWG maximum).



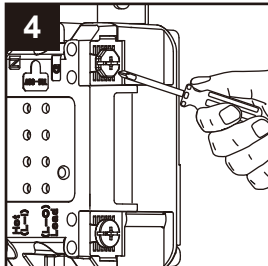
4. Installing In-Wall Timer.



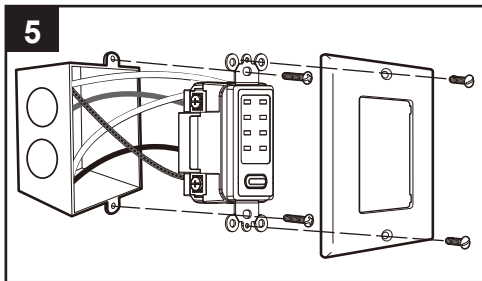
- (1) Insert the ground or bare wire(s) into the hole(s) labeled "G" (near green screw) (see figure 2).
- (2) Insert 2 neutral wires into the holes labeled "N" (near silver screw). If the neutral wires from the wall box are short and do not reach the N hole, cut the wire at 1-1/4 in. from the bottom of the case. Remove jacket at 1/2 in. of both ends. Connect the shorter cord with enclosed jumper (white) wire and wire nut, then insert to another N hole (see figure 3).



- (3) Insert the hot wire into the hole labeled "L-I" (near brass screw) (see figure 2).
- (4) Insert the load wire into the hole labeled "L-O" (near brass screw) (see figure 2).
- (5) Tighten all screws firmly. (see figure 4).



- (6) Carefully fold wire into wall box and mount timer into wall box using mounting screws, then attach the wall plate using the mounting screws (see figure 5).



- (7) Turn on the power.

Operations Time Setting

To set timer, press button repeatedly to select one of the nine time settings.
(5 minutes - 10 minutes - 15 minutes - 20 minutes - 30 minutes - 1 hours - 2 hours - 4 hours - OFF (unlighted))

Safety Information

Please read and understand this entire manual before attempting to assemble, operate or install the product.

DO NOT ATTACH A DEVICE THAT EXCEEDS THE UNIT RATINGS:
125 V ac 60 Hz, 15 A Resistive, 15 A General Use,
1000 W Tungsten, 500 VA Electronic Ballast,
1/2HP. 120 V ac 60 Hz, 8.3 A Ballast

Federal Communications Commission Interference Statement

This equipment has been tested and found to comply with the limits for Class B digital device, pursuant to part 15 of the FCC Rules. These limits are designed to provide reasonable protection against harmful interference in a residential installation. This equipment generates, uses and can radiate radio frequency energy and, if not installed and used in accordance with the instructions, may cause harmful interference to radio or television reception, which can be determined by turning the equipment off and on, the user is encouraged to try to correct the interference by one or more of the following measures:

- Reorient or relocate the receiving antenna.
- Increase the separation between the equipment and the receiver.
- Connect the equipment into an outlet on a circuit different from that to which the receiver is connected.
- Consult the dealer or an experienced radio/TV technician for help.

This device complies with Part 15 of the FCC Rules. Operation is subject to the following two conditions: (1) This device may not cause harmful interference, and (2) this device must accept any interference received, including interference that may cause undesired operation of the device.
FCC Caution: Any changes or modifications not expressly approved by the party responsible for compliance could void the user's authority to operate this equipment..

Caution

- Do not attach a device that exceeds the unit ratings as described in the Safety Information section of this manual.
- Wattage of lamps or appliances controlled must NOT exceed rated capacity.
- **FOR INDOOR USE ONLY.**
- Installation by a licensed electrician to local, state and national codes is recommended.
- Remove wall plate and make sure both hot and neutral wires are present in the junction box. If both wires are not present, additional wiring will be necessary before installation can be completed.
- Check that all wire connections are secure.
- Place all wires inside junction box. Fit timer into junction box.
- Reconnect electrical power.

Follow Us On Social Media



www.fosmon.com
support@fosmon.com
© 2019 Fosmon Inc. All rights reserved.

Limited Lifetime Warranty

Visit fosmon.com/warranty for Product Registration, warranty and limited liability details.

Recycling the Product

To dispose of this product properly, please follow the recycling process regulated in your area.